

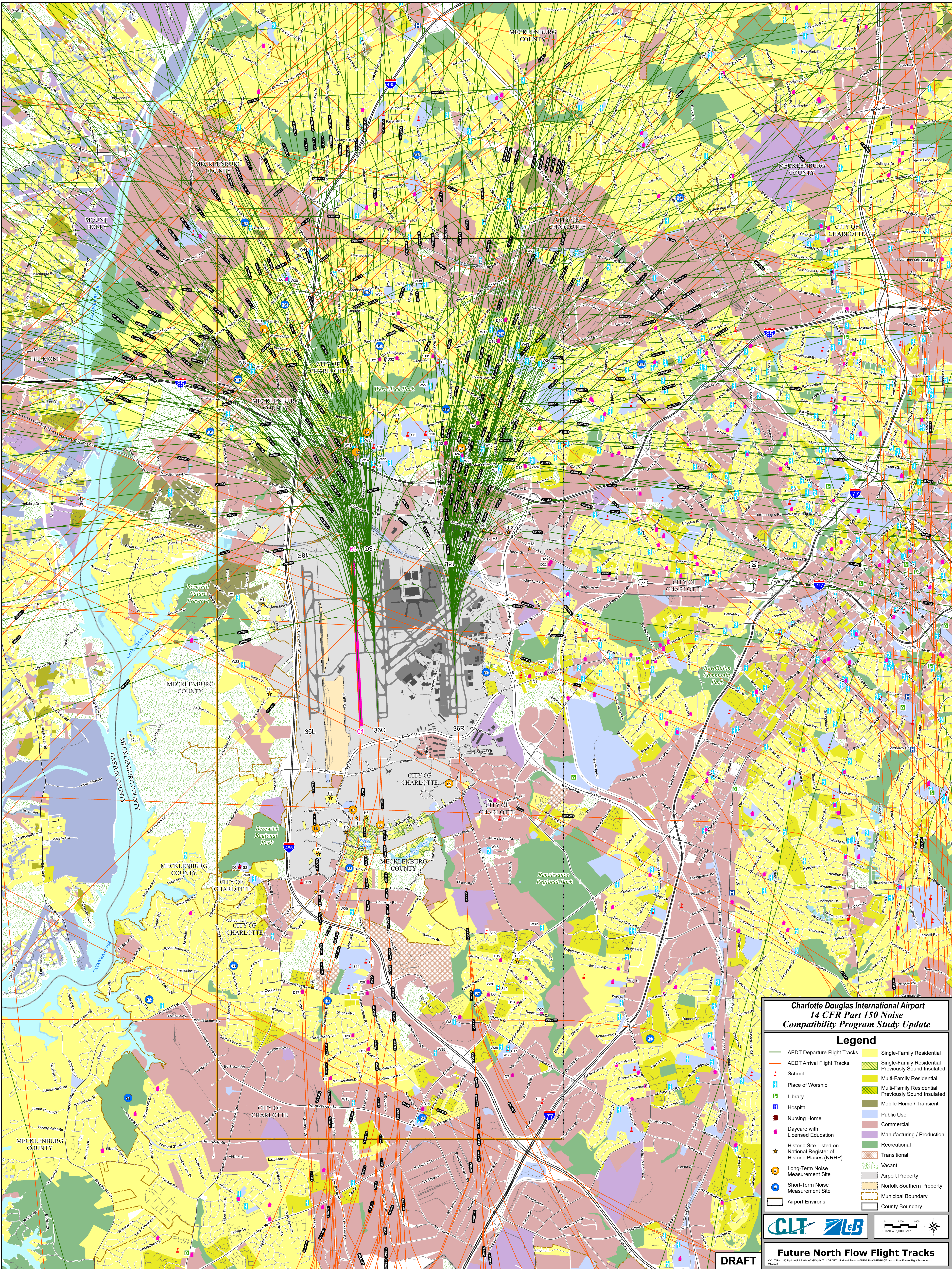
**Charlotte Douglas International Airport
14 CFR Part 150 Noise
Compatibility Program Study Update**

Legend			
	AEDT Departure Flight Tracks		Single-Family Residential
	AEDT Arrival Flight Tracks		Single-Family Residential Previously Sound Insulated
	School		Multi-Family Residential
	Place of Worship		Multi-Family Residential Previously Sound Insulated
	Library		Mobile Home / Transient
	Hospital		Public Use
	Nursing Home		Commercial
	Daycare with Licensed Education		Manufacturing / Production
	Historic Site Listed on National Register of Historic Places (NRHP)		Recreational
	Long-Term Noise Measurement Site		Transitional
	Short-Term Noise Measurement Site		Vacant
	Airport Environs		Airport Property
			Norfolk Southern Property
			Municipal Boundary
			County Boundary



Existing North Flow Flight Tracks

DRAFT



**Charlotte Douglas International Airport
14 CFR Part 150 Noise
Compatibility Program Study Update**

Legend

— AEDT Departure Flight Tracks	Single-Family Residential
— AEDT Arrival Flight Tracks	Single-Family Residential Previously Sound Insulated
🏫 School	Multi-Family Residential
🕌 Place of Worship	Multi-Family Residential Previously Sound Insulated
📖 Library	Mobile Home / Transient
🏥 Hospital	Public Use
🏠 Nursing Home	Commercial
🏡 Daycare with Licensed Education	Manufacturing / Production
★ Historic Site Listed on National Register of Historic Places (NRHP)	Recreational
📍 Long-Term Noise Measurement Site	Transitional
📍 Short-Term Noise Measurement Site	Vacant
🏠 Airport Environs	🏢 Airport Property
	🏢 Norfolk Southern Property
	🏢 Municipal Boundary
	🏢 County Boundary

CLT **LeB**

Future North Flow Flight Tracks

DRAFT

Y:\CLT\150 Update\GIS\Map12\GRM0111.DWG - Updated Noise/REM/PA/NEP/150 North Flow Future Flight Tracks.mxd 10/2024

